

# Human Nectin-4 Protein

Cat. No. NEC-HM404



## Description

<b>Source</b>	Recombinant Human Nectin-4 Protein is expressed from HEK293 with His tag and Avi tag at the C-Terminus It contains Gly32-Val351.
<b>Accession</b>	Q96NY8
<b>Molecular Weight</b>	The protein has a predicted MW of 37.2 kDa. Due to glycosylation, the protein migrates to 46-48 kDa based on Bis-Tris PAGE result.
<b>Endotoxin</b>	Less than 1 EU per µg by the LAL method.
<b>Purity</b>	> 95% as determined by Bis-Tris PAGE; > 95% as determined by SEC-HPLC

## Formulation and Storage

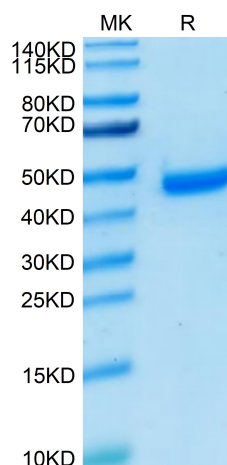
<b>Formulation</b>	Lyophilized from 0.22 µm filtered solution in PBS (pH 7.4). Normally 8% trehalose is added as protectant before lyophilization.
<b>Reconstitution</b>	Centrifuge the tube before opening. Reconstituting to a concentration more than 100 µg/ml is recommended. Dissolve the lyophilized protein in distilled water.
<b>Storage</b>	-20 to -80°C for 12 months as supplied from date of receipt. -80°C for 3 months after reconstitution. Recommend to aliquot the protein into smaller quantities for optimal storage. Please minimize freeze-thaw cycles.

## Background

Nectin-4 seems to be involved in cell adhesion through trans-homophilic and -heterophilic interactions, the latter including specifically interactions with NECTIN1. Does not act as receptor for alpha-herpesvirus entry into cells. (Microbial infection) Acts as a receptor for measles virus.

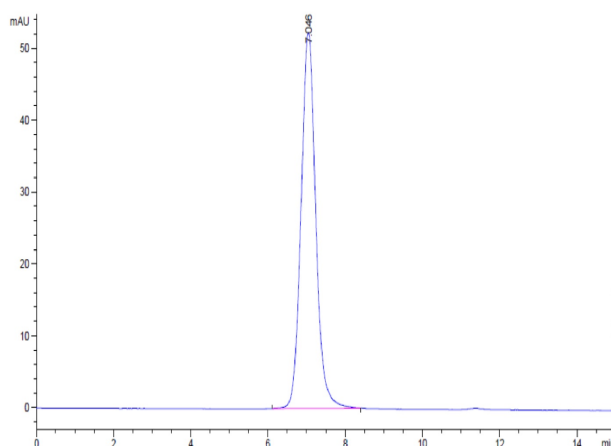
## Assay Data

### Bis-Tris PAGE



Human Nectin-4 on Bis-Tris PAGE under reduced condition. The purity is greater than 95%.

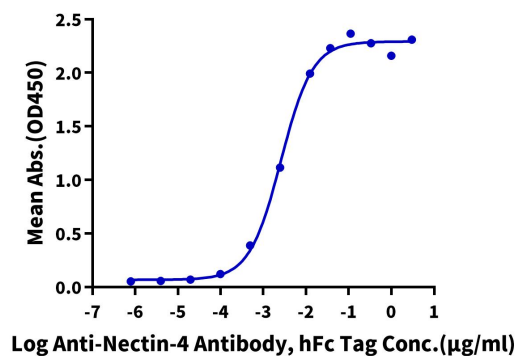
### SEC-HPLC



The purity of Human Nectin-4 is greater than 95% as determined by SEC-HPLC.

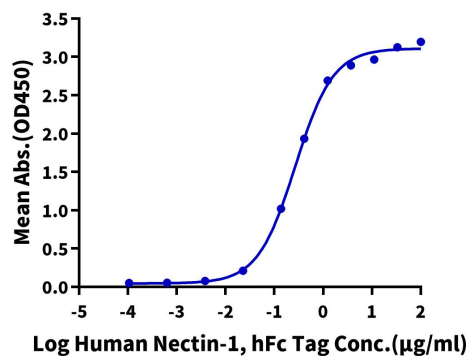
## Assay Data

## ELISA Data

**Human Nectin-4, His Tag ELISA**0.05 $\mu$ g Human Nectin-4, His Tag Per Well

Immobilized Human Nectin-4 at 0.5  $\mu$ g/ml (100  $\mu$ l/well) on the plate. Dose response curve for Anti-Nectin-4 Antibody, hFc Tag with the EC50 of 2.6 ng/ml determined by ELISA (QC Test).

## ELISA Data

**Human Nectin-4, His Tag ELISA**0.2 $\mu$ g Human Nectin-4, His Tag Per Well

Immobilized Human Nectin-4, His Tag at 2  $\mu$ g/ml (100  $\mu$ l/well) on the plate. Dose response curve for Human Nectin-1, hFc Tag with the EC50 of 0.27  $\mu$ g/ml determined by ELISA.